

Austin Memorial Park Drawings: Univ. of Texas' School of Architecture Historic Preservation Master's Program

Elevation and History

AUSTIN MEMORIAL PARK CEMETERY

THE AUSTIN MEMORIAL PARK CEMETERY OPENED IN APRIL 1928 ON AUSTIN-BURNET ROAD (NOW HANCOCK DRIVE) IN AUSTIN, TEXAS. THE AUSTIN MEMORIAL PARK, A PRIVATE CORPORATION, PURCHASED THE ORIGINAL 112-ACRE PLOT FROM GLADYS AND J.T. BOWMAN. THE CEMETERY ORIGINALLY OFFERED 1200 BURIAL LOTS, AND W.L. ARNOLD OF KANSAS CITY WAS THE CEMETERY'S FIRST RESIDING SUPERINTENDENT.

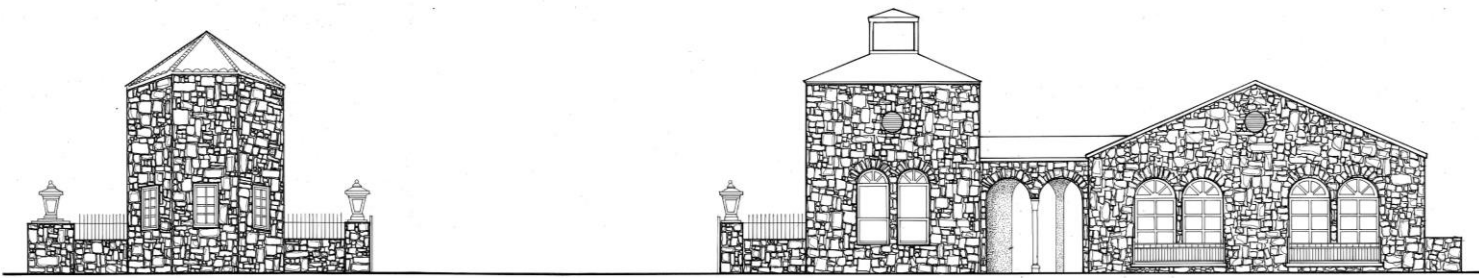
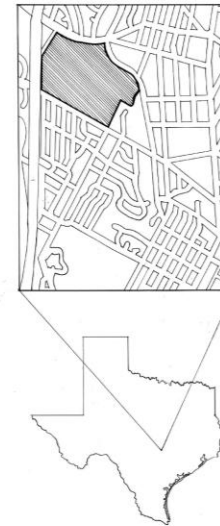
AN OFFICE, CHAPEL, SERVICE TOWER, AND CARETAKER'S RESIDENCE WERE BUILT AS THE CEMETERY ENTRANCE BEFORE ITS OPENING IN 1928. ARCHITECT W.H. CHAMBERS OF SAN ANTONIO, ALSO RESPONSIBLE FOR THE MISSION BURIAL PARK IN SAN ANTONIO, DESIGNED THE ROUGH NATIVE STONE BUILDINGS. ALTHOUGH IN NEED OF REPAIR, ALL OF THE BUILDINGS SURVIVE TODAY. ARCHITECTURALLY, THE BUILDINGS REPRESENT A SIMPLE USE OF VERNACULAR CONSTRUCTION METHODS AND MATERIALS, COMBINED WITH FINER DETAILING IN THE SPANISH-STYLE COLUMNS AND ARCADE.

AUSTIN MEMORIAL PARK IS SIGNIFICANT AS A HISTORIC CEMETERY. IN 1941 THE PROPERTY WAS SOLD TO THE CITY OF AUSTIN. TODAY IT IS THE ONLY CEMETERY IN THE CITY OF AUSTIN WITH AVAILABLE BURIAL SPACE AND WILL CONTINUE TO BE SO SINCE, BY LAW, NO NEW CEMETERY CAN BE CREATED WITHIN AUSTIN CITY LIMITS. THE SITE WAS DESIGNATED A TEXAS HISTORICAL CEMETERY IN JANUARY OF 2008.

ARCHITECTURAL DOCUMENTATION OF THE AUSTIN MEMORIAL PARK WAS PREPARED BY THE SCHOOL OF ARCHITECTURE AT THE UNIVERSITY OF TEXAS AT AUSTIN IN APRIL 2008 IN ACCORDANCE WITH THE GOALS AND STANDARDS OF THE HISTORIC AMERICAN BUILDINGS SURVEY.

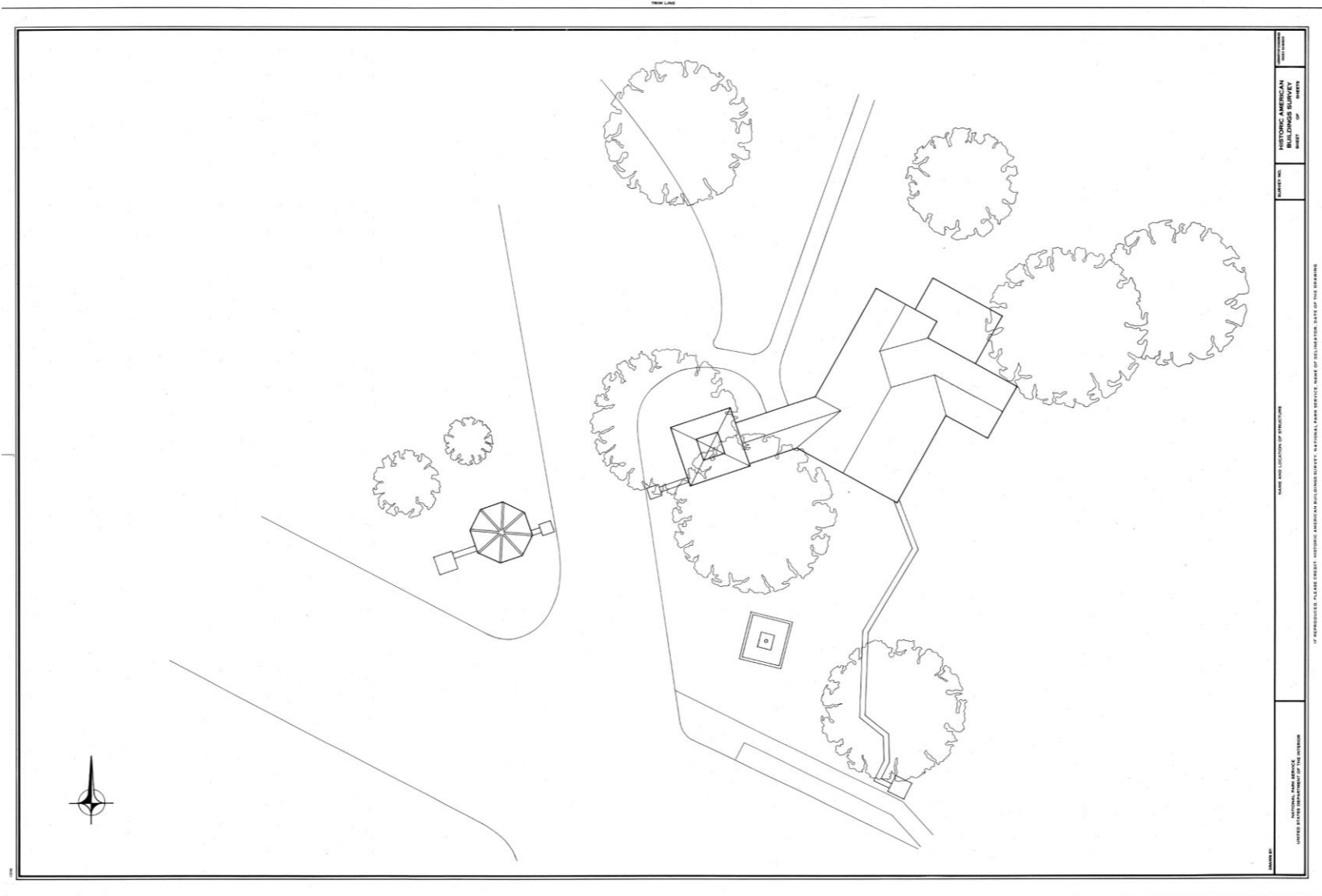
PROJECT DIRECTOR WAS DR. MONICA PENICK, LECTURER IN THE SCHOOL OF ARCHITECTURE. THE GRADUATE STUDENT TEAM CONSISTED OF SAMUEL DODD, CASEY GALLAGHER, ANNA GLOVER, KAREN HICKS, MEGHAN KLEON, KRISTINA KUPFERSCHMID, SHONDA MACE, CYNTHIA MARTIN, TIMOTHY NOTZON, KATHRYN PIERCE AND MICHELLE STANARD.

FUNDS, MATERIALS AND EQUIPMENT WERE GENEROUSLY PROVIDED BY THE UNIVERSITY OF TEXAS AT AUSTIN. SPECIAL THANKS TO THE CITY OF AUSTIN, THE STAFF AT AUSTIN MEMORIAL PARK, AND MEMBERS OF SAVE AUSTIN CEMETERIES AND AUSTIN RAMP.



HISTORIC AMERICAN BUILDINGS SURVEY
 UNIVERSITY OF TEXAS AT AUSTIN
 SCHOOL OF ARCHITECTURE
 AUSTIN MEMORIAL PARK CEMETERY
 2800 HANCOCK DRIVE
 AUSTIN, TEXAS 78712
 © 2008 UNIVERSITY OF TEXAS AT AUSTIN

Site Plan



DATE AND LOCATION OF STRUCTURE

NATIONAL LAND SERVICE
UNITED STATES DEPARTMENT OF THE INTERIOR

HISTORIC AMERICAN BUILDINGS SURVEY
PROJECT OF

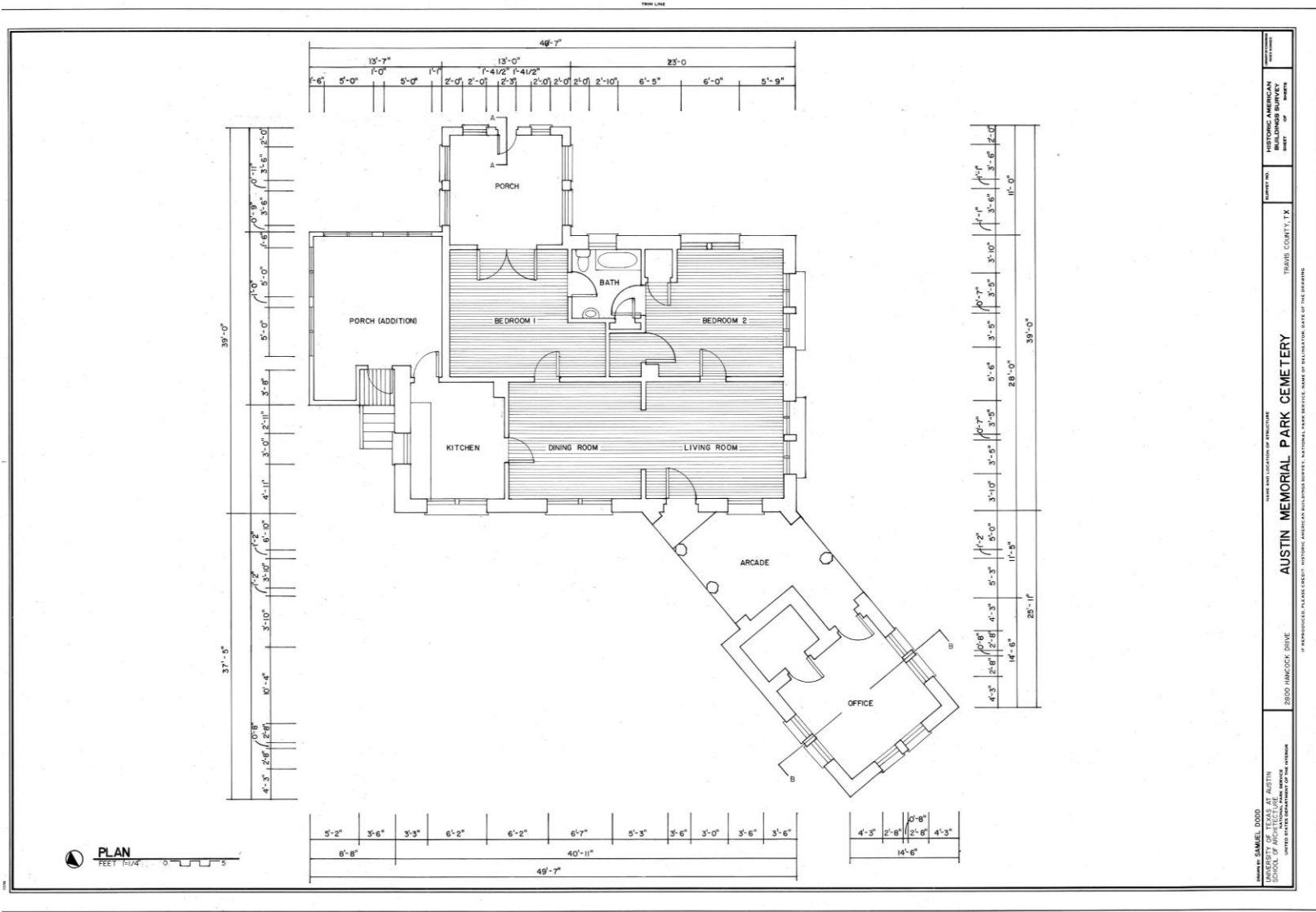
DATE

BY

OF

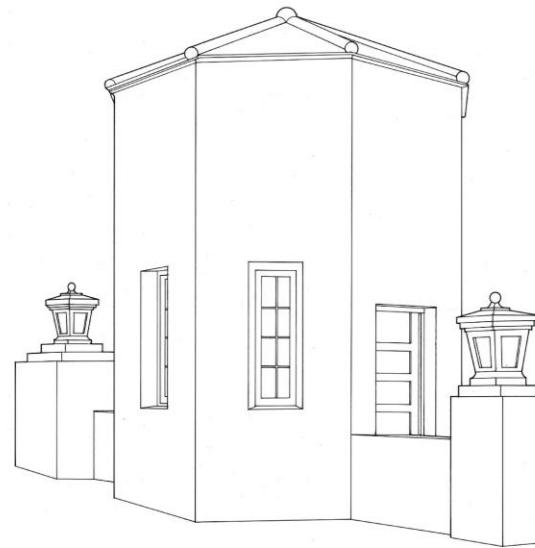
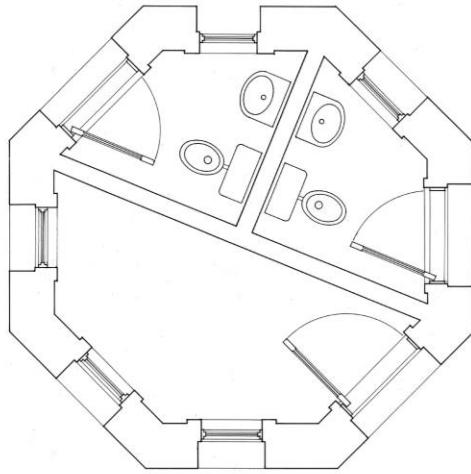
REPRODUCED BY THE GREAT HISTORIC AMERICAN BUILDINGS SURVEY, A NATIONAL LAND SERVICE, BUREAU OF GEOLOGICAL SURVEY OF THE DEPARTMENT OF THE INTERIOR

Floor Plan



Tower Restroom

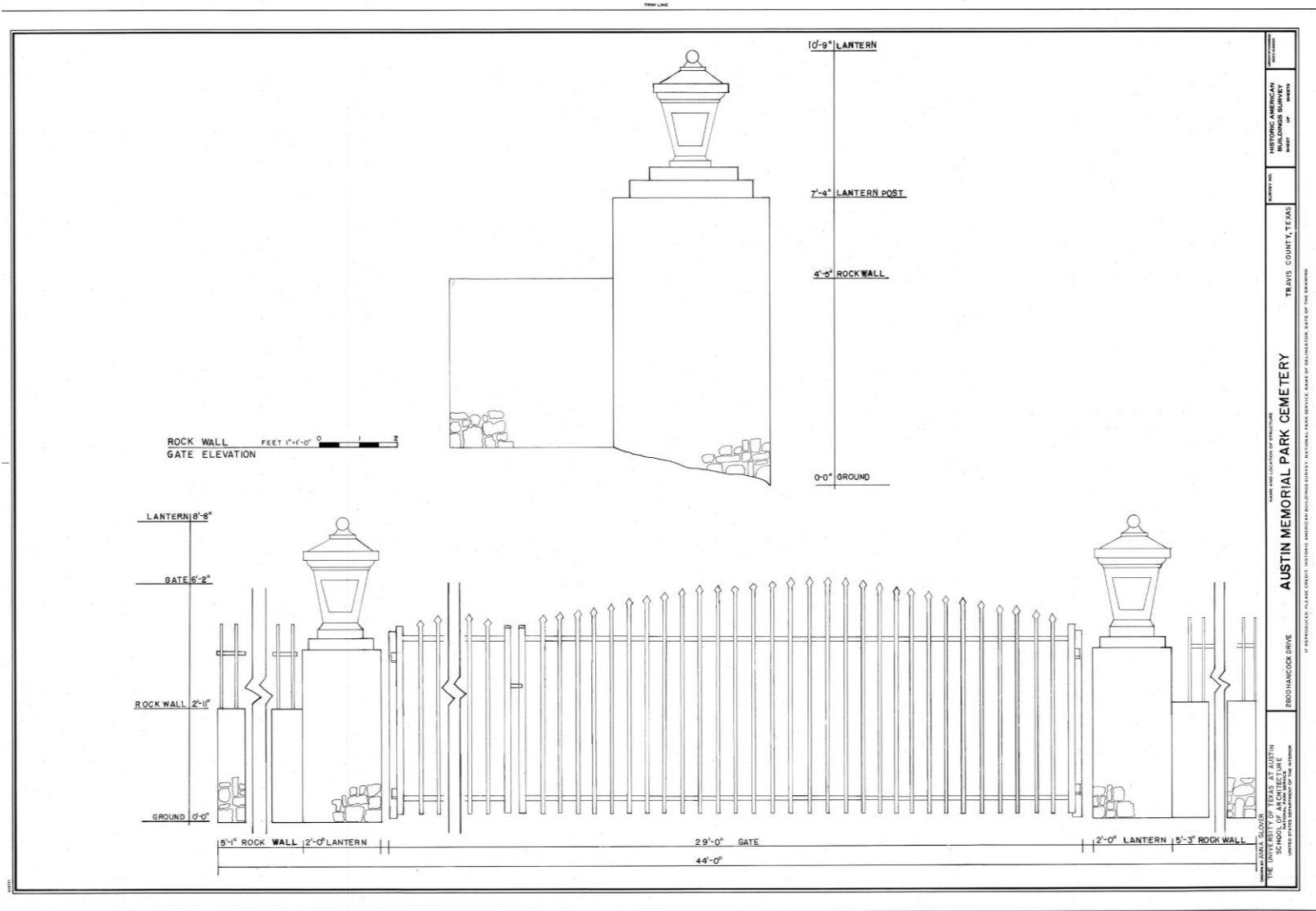
TRIM LINE



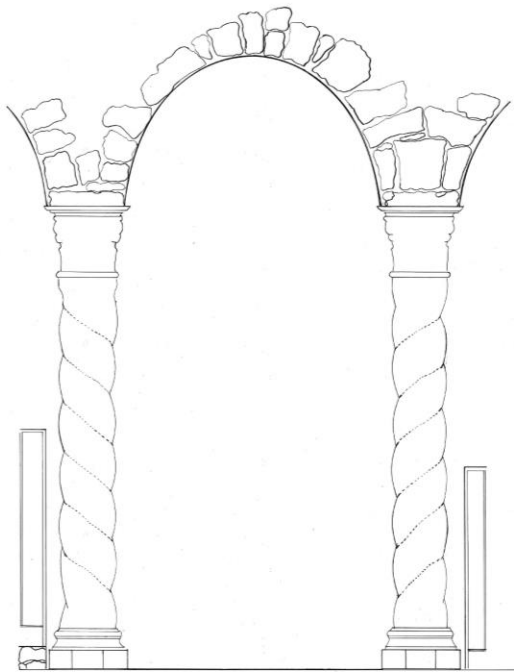
DATE: 01/11/2011
DRAWN BY: J. B. [unreadable]
CHECKED BY: [unreadable]
PROJECT NO.: [unreadable]
PROJECT NAME: HISTORIC AMERICAN ARCHITECTURE
PROJECT LOCATION: [unreadable]
PROJECT DESCRIPTION: HISTORIC AMERICAN ARCHITECTURE NATIONAL PARK SERVICE, BUREAU OF LAND MANAGEMENT, BUREAU OF LAND MANAGEMENT
PROJECT NO.: [unreadable]
PROJECT NAME: HISTORIC AMERICAN ARCHITECTURE
PROJECT LOCATION: [unreadable]
PROJECT DESCRIPTION: HISTORIC AMERICAN ARCHITECTURE NATIONAL PARK SERVICE, BUREAU OF LAND MANAGEMENT, BUREAU OF LAND MANAGEMENT

TRIM LINE

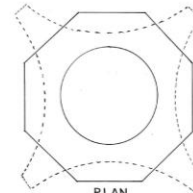
Gate



Details



ELEVATION
SCALE 1/32" = 1'



PLAN
SCALE 3/4" = 1'



CAPITAL
SCALE 1/2" = 1'

COLUMN DETAILS

OFFICE OF ARCHITECTURAL SCIENCE
 SCHOOL OF ARCHITECTURE AT AUSTIN
 UNIVERSITY OF TEXAS AT AUSTIN
 2 EDDY HANCOCK DRIVE
 AUSTIN MEMORIAL PARK CEMETERY
 TEMPS COUNTY, TEXAS
 SURVEY NO.
 SHEET OF

IF REPRODUCED, PLEASE CREDIT HISTORICAL ARCHITECTURAL BUILDINGS SURVEY, NATIONAL PARK SERVICE, BUREAU OF ANTIQUITIES, STATE OF TEXAS